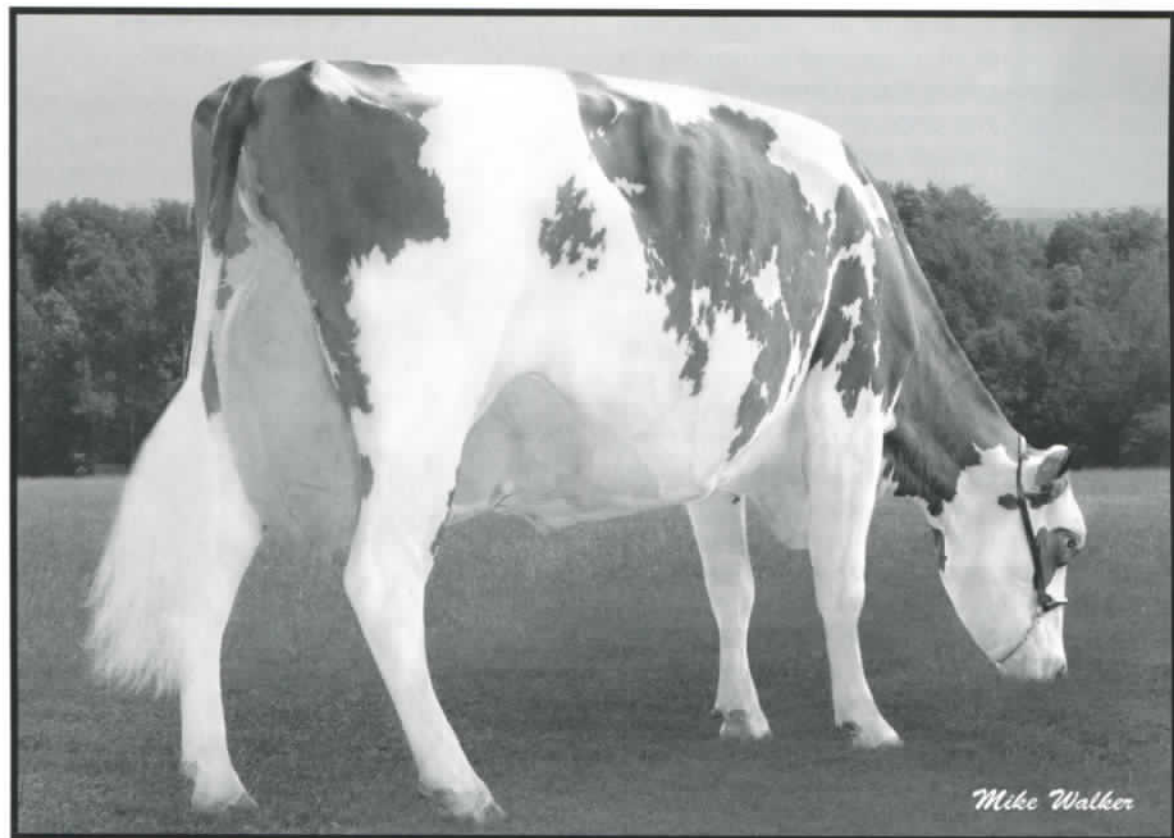


We're Sweet on Red & Whites Because of Cows like Sugar!



SPRING-FED REDLIN SUGAR-RED (2E-91 EEEEE)

3-05 2x 365 30,700 3.6 1115 3.2 968

6-02 2x 282 26,245 3.2 846 3.2 839 (Inc.)

Over 100,000M to date and due in January '16 to Carson-Red.

Sugar is a herd favorite and the "complete cow" that we love to work with and build upon! A great everyday producer with outstanding type, she completes 7 generations of VG & EX, long-lived cows in the **Derrwyn Centra Selsy-Red-ET (EX-91, GMD-DOM)** family.

Sugar is proving herself "a transmitter" as well. She has three daughters here at the farm: **Wall-St Dusk Spice-Red**, a Dusk daughter milking in her second lactation with 11,169m 327f 362p in 121 days; **Wall-St Picolo Saffron-Red**, a fancy bred heifer by Picolo; and **Wall-St Armani Skittles *RC**, a stylish July '14 calf sired by Armani.

A significant portion of our herd is Red & White or Red Factor, backed by the same kind of high-type, high-production cow families as Sugar. Your inquiries and visit to see them are always welcome!

Red & White Dairy Cattle Convention
July 14-16, 2015 - Decorah, IA



Wall Street Dairy LLC

The Winton & Wolcott Families and Jim Modica

3353 Wall Street, Mayville, NY 14757

908-872-2682 • www.wallstreetdairy.com • WallStreetDairy@aol.com

Follow us on Twitter @WallStreetDairy
and Facebook at Wall Street Dairy



James 1:17, "All good gifts around us come from Heaven Above."



BAA: 109.5