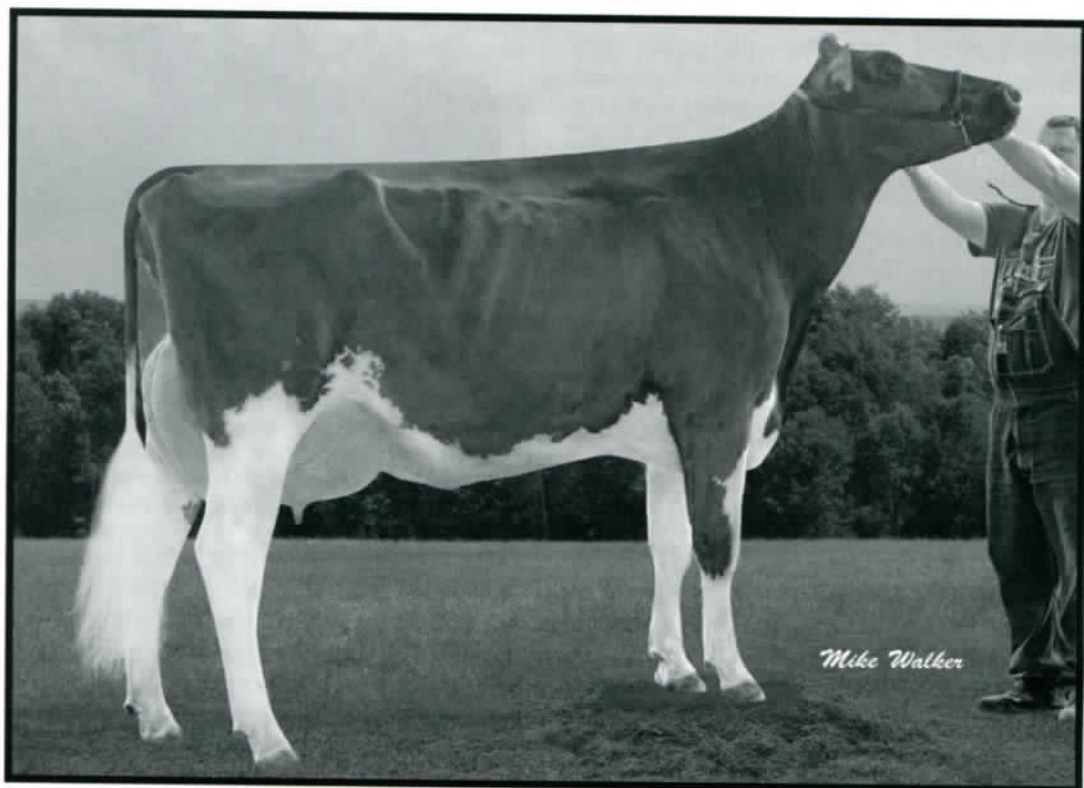


Just as We Imagined . . . Now Excellent as a 3-Year-Old!



MARSH-VUE AD PATTIE-RED-ET (EX-90, EX-MS @ 3-10)

2-01 2x 294 18,300m 617f 564p

3-01 2x 220 24,476m 587f 756p (Inc.)

Due September 19 to Carson-Red

Sired by Advent, Pattie came to Wall Street Dairy as a bred heifer through the 2013 National Red & White Convention Sale held in Chautauqua County. An impressive heifer at the time, she has developed into a herd favorite here. She has one daughter to date, **Marsh-Vue Ladd P Pamela-Red**, a fancy September '13 Ladd P daughter, and we are raising Pattie's September '14 Ladd P son as well.

Pattie's pedigree is packed with great, long-lived cows. Her 7 nearest dams are all VG & EX, all with over 1000f, all with high lifetimes as well. Her dam is a 2E-90 Mr. Burns with 35,880 3.9 1395 2.9 1042, followed by a VG-86, CAN September Storm with 1232f & 145,781 4.2 6091 3.2 4676 lifetime. Her VG Allen 3rd dam has 1179f, then a VG-85 13* Rudolph with 1634f, a VG-87 5th dam with records to 56,039 3.8 2127 3.1 1715, followed by a VG-86 Triple Threat with 1049f & a VG-85 7th dam with 1016f & 167,000m lifetime.

Pattie was one of 4 new Excellents in our May 2015 classification. The others are **Spring-Fed Aftershock Isis (EX-90, EX-MS)**, **The-Street Sanchez Ava (EX-90, EX-MS)**, and **Wall-St G W Atwood Sakura (EX-90, EX-MS)**. We were also thrilled to have 8 new VG 2-year-olds. In addition, Spring-Fed Freelance Lottie is now 3E-91 and Spring-Fed Cousteau Mango is now 2E-90. We love our old girls!

Pattie has certainly met our expectations since we purchased her two years ago, and we're confident of her bright future. We'll be headed to this year's National Red & White Convention Sale July 16 in Decorah, IA!



Wall Street Dairy LLC

The Winton & Wolcott Families and Jim Modica
3353 Wall Street, Mayville, NY 14757

908-872-2682 • www.wallstreetdairy.com • WallStreetDairy@aol.com

Follow us on Twitter @WallStreetDairy
and Facebook at Wall Street Dairy



James 1:17, "All good gifts around us come from Heaven Above."



May 2015 Classification
BAA: 108.7
15 EX (4 new)
44 VG (15 new) 21 GP